

ISSUE 2021

# Open Bistro



RÖSHULTS















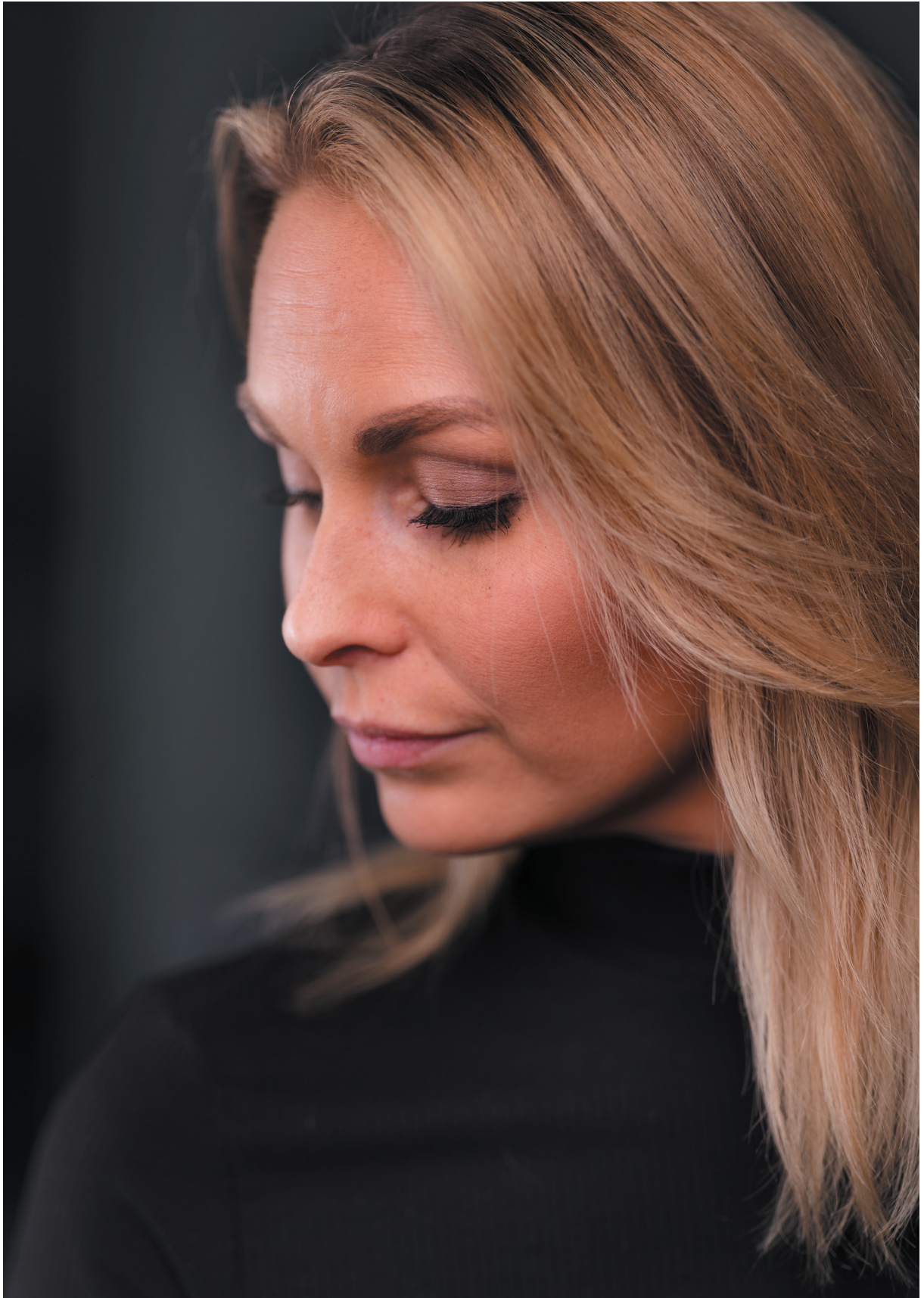














# Open Bistro



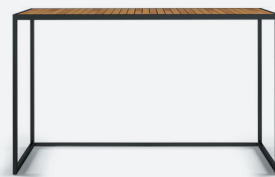
---

With Open Kitchen Bistro you get more out of your Open Kitchen. Build it just the way you want it and let friends and family gather around you making dinner.

# Build yourself a social kitchen.



1. Build your Open Kitchen



2. Add Open Bistro.



3. Add Garden Bar Chair.

New



\* Plus a 5mm adjustable foot, adjustability of 10 mm.  
\* Can not be placed beside gas or charcoal modules

## Open Bistro 100X50

Design: Broberg & Ridderstråle

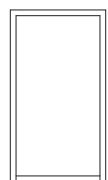
Art no: 200345

Colours: Anthracite, Golden Brown

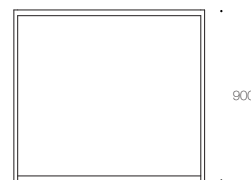
Materials: Stainless Steel, Teak

Measurements: L 1000 D 500 H 900 mm / L 39.4 D 19.7 H 35.4 in\*

Weight: 17.5 kg / 38.6lb



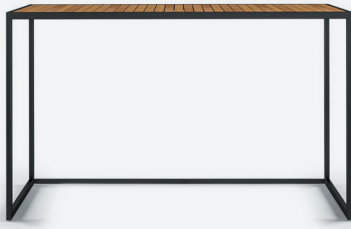
500



1000



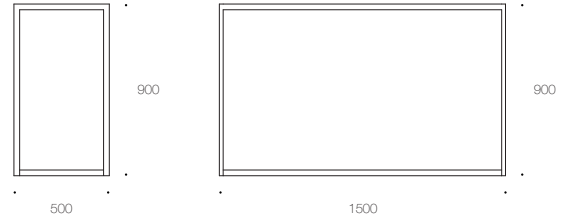
New



\* Plus a 5mm adjustable foot, adjustability of 10 mm.  
\* Can not be placed beside gas or charcoal modules

### Open Bistro 150x50

Design:	Broberg & Ridderstråle
Art no:	200347
Colours:	Anthracite, Golden Brown
Materials:	Stainless Steel, Teak
Measurements:	L 1500 D 500 H 900 mm / L 59.1 D 19.7 H 35.4 in*
Weight:	23 kg / 50.7 lb



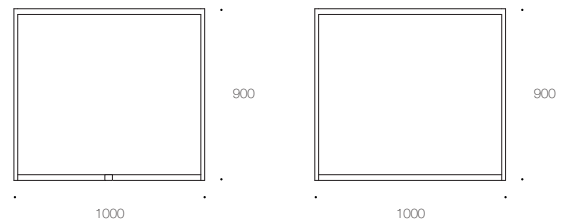
New



\* Plus a 5mm adjustable foot, adjustability of 10 mm.  
\* Can not be placed beside gas or charcoal modules

### Open Bistro 100x100

Design:	Broberg & Ridderstråle
Art no:	200346
Colours:	Anthracite, Golden Brown
Materials:	Stainless Steel, Teak
Measurements:	L 1000 D 1000 H 900 mm / L 39.4 D 39.4 H 35.4 in*
Weight:	32 kg / 70.5 lb



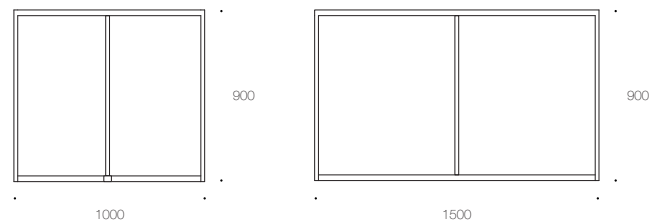
New

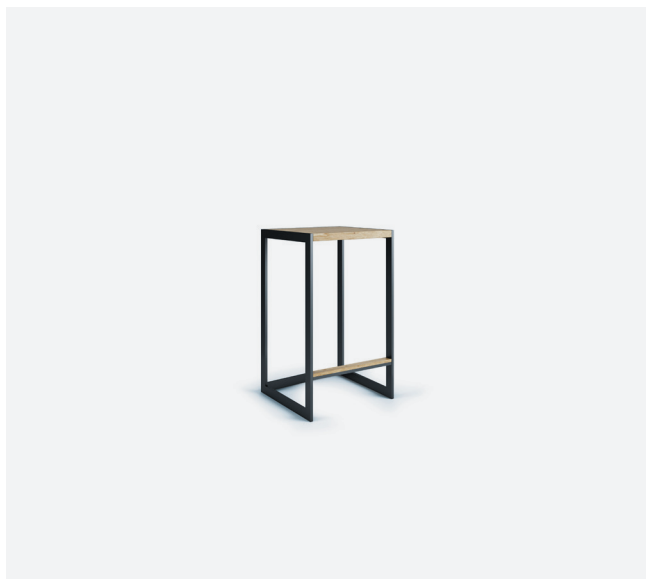


\* Plus a 5mm adjustable foot, adjustability of 10 mm.  
\* Can not be placed beside gas or charcoal modules

### Open Bistro 150x100

Design:	Broberg & Ridderstråle
Art no:	200348
Colours:	Anthracite, Golden Brown
Materials:	Stainless Steel, Teak
Measurements:	L 1500 D 1000 H 900 mm / L 59.1 D 39.4 H 35.4 in*
Weight:	35kg / 77 lb





## Garden Bar Chair Low

Design:	Broberg & Ridderstråle
Art no:	200156 / 100218
Colours:	Anthracite, Golden Brown
Materials:	Aluminium or Stainless Steel, Teak
Measurements:	L 350 D 320 H 600 mm / L 13.8 D 12.6 H 23.6 in
Weight:	4 kg or 5.5 kg / 8.8 lb or 12.1 lb

## Open Bistro Fixture

To attach your Open Bistro to your Open Kitchen, you need a fixture. Which one you need depends on what configuration you have.



Type A.  
200366



Type B.  
200367



Type C.  
200368



Type D.  
200369







# Build your own Open Kitchen.

Visualize your dream kitchen – visit [www.rosults.com](http://www.rosults.com)



ROSHULTS.COM

